

TRITON FULL HEIGHT

Curved Glass Turnstile



The TRITON full height series is designed to be a high security and aesthetic access control solution.

APPLICATIONS

- Suited for applications requiring high volume access and high levels of security
- Used extensively in applications such as office receptions, commercial buildings and universities.

DESIGNED FOR:

- Interior Installation
- Harsh operating conditions

AVAILABLE CONFIGURATIONS

- 3 wing (120°)
- Single

- FEATURES**
- Zinc plated for corrosion resistance
 - Ultra quiet, buffered solenoids and pawls
 - Solenoids rated for 100% duty cycle
 - Cased hardened locking disk and pawls eliminate any wear
 - Factory settings need no further adjustment
 - No routine maintenance ever
 - Ultra heavy-duty electromechanical rotation locking mechanism
 - Bi-directional operation

TECHNICAL SPECIFICATIONS

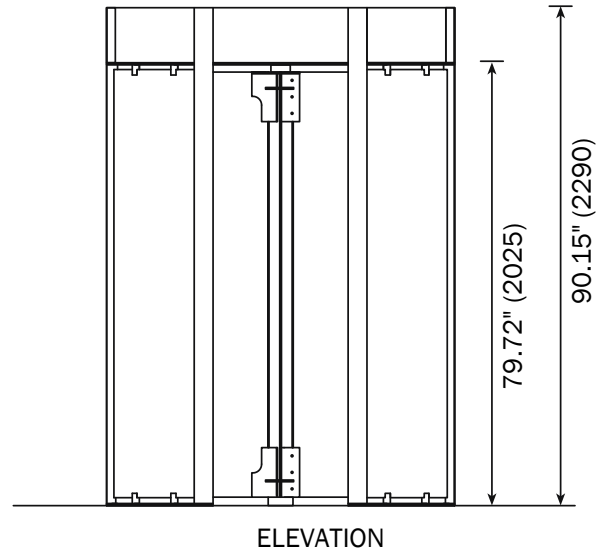
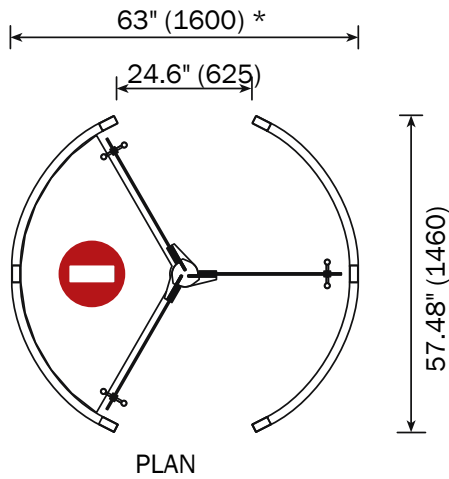
	220 Volt AC (110 Volt AC on request)
	50Hz / 60Hz
POWER CONSUMPTION	50W (single turnstile)
SOLENOID VOLTAGE	24 Volt DC (12 Volt DC on request)
	24 Volt DC
	Single turnstile 63" (1400) wide x 90.15" (2290) high
ROTOR DIAMETER	55.11" (1400mm)
ROTOR WING CONFIGURATION	3 wing (120°)
FORM	Curved
ROTOR GLASS WINGS	8mm toughened glass
FRAME GLASS INFILL	6mm toughened curved glass
PUSH HANDLES	Stainless steel
LIGHTING	4 low-voltage downlighters
PRESSURE MAT DESIGN	Combination of steel plates and foam covered by carpet indicating not entry
SYSTEMS INTEGRATION	<p>Modular bolt-together design for ease of transport and installation. Components can pass through a standard door. Can be packed in broken-down form either onto a pallet or into a crate for transport</p> <ul style="list-style-type: none"> Integrates with all access control and time & attendance systems Unlocking for entry / exit rotation controlled through normally open dry contact Transaction / Rotation complete output Integral wireways with draw wires in place – no exposed wires

MANUFACTURING OPTIONS

ROTATION OPTIONS	<ul style="list-style-type: none"> Electrically controlled bi-directional rotation (factory standard) Mechanically controlled uni-directional rotation by means of key override Free rotation
LOCKING OPTIONS	<ul style="list-style-type: none"> Fail-secure auto-lock on power failure (factory standard) Fail-safe auto-unlock on power failure Each direction of rotation configurable for either fail-secure or fail-safe operation
FIRE ALARM OPTIONS	<ul style="list-style-type: none"> Free rotation when triggered indefinitely (logic programmed for either direction of rotation on request)
POWER OPTIONS	<ul style="list-style-type: none"> Battery backup with two 12 volt 7Ah batteries connected in series <ul style="list-style-type: none"> Up to 1 000 transactions in fail-secure mode Up to 60 minutes operation in fail-safe mode
ACCESSORY OPTIONS	<ul style="list-style-type: none"> Card / Proximity reader mounting brackets Biometric / Fingerprint reader mounting brackets Single / Double pushbutton in plastic housing LED red cross and green arrow indicator light
PRESSURE MAT ACCESSORY OPTIONS	<ul style="list-style-type: none"> Single pushbutton in plastic housing Single button remote control and remote control transmitter and receiver
FRAME FINISH OPTIONS	<ul style="list-style-type: none"> Mild steel with UV resistant polyester exterior powder coat finish (white) <input type="checkbox"/> 304 grade brushed stainless steel 316 grade brushed stainless steel <input type="checkbox"/> <p><input type="checkbox"/> other colours available on request <input type="checkbox"/> suitable for corrosive environments (details available on request)</p>



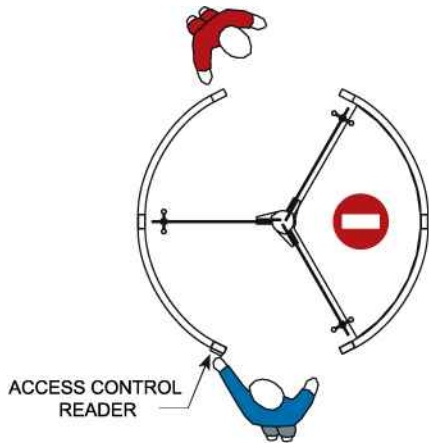
TRITON CURVED SINGLE DIMENSIONS: Inches (mm)



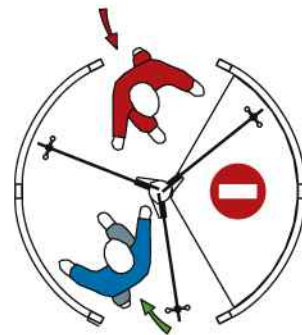
* 70.86" (1800) wide unit also available

PRESSURE MAT OPERATION

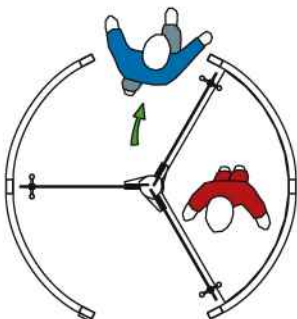
STEP 1: Access control reader is triggered to allow authorized access in the desired direction



STEP 2: Turnstile unlocks allowing rotation in the authorized direction. An unauthorized pedestrian may enter the turnstile at this point.



STEP 3: Unauthorized pedestrian becomes trapped inside the locked turnstile



STEP 4: Building security is alerted and a push button / remote control is used to unlock the turnstile and allow reverse rotation out of the turnstile

